

Oconto Falls School District  
**PROJECT DESIGN KICKOFF**



Presented by:

**NEXUS**  
SOLUTIONS®



# Agenda

- Introductions
- Today's Objective
- Design Process Overview
- Project Design Documentation
- Next Steps
- Q & A



# Today's Objective

- Design Team Overview
- Establish Design Process
- Review Project Scope
- Discuss Future Meeting Cadence
- Let's Get Going!



# Design Team

- Program Manager
- Architectural Design
- Civil/Site Engineering
- Mechanical Engineering
- Plumbing Engineering
- Electrical Engineering
- Building Envelope Rehab

Nexus Solutions

Somerville Architects

Point of Beginning

Nexus Solutions

Nexus Solutions

Grumman Butkus

Building Envelope  
Professionals Group

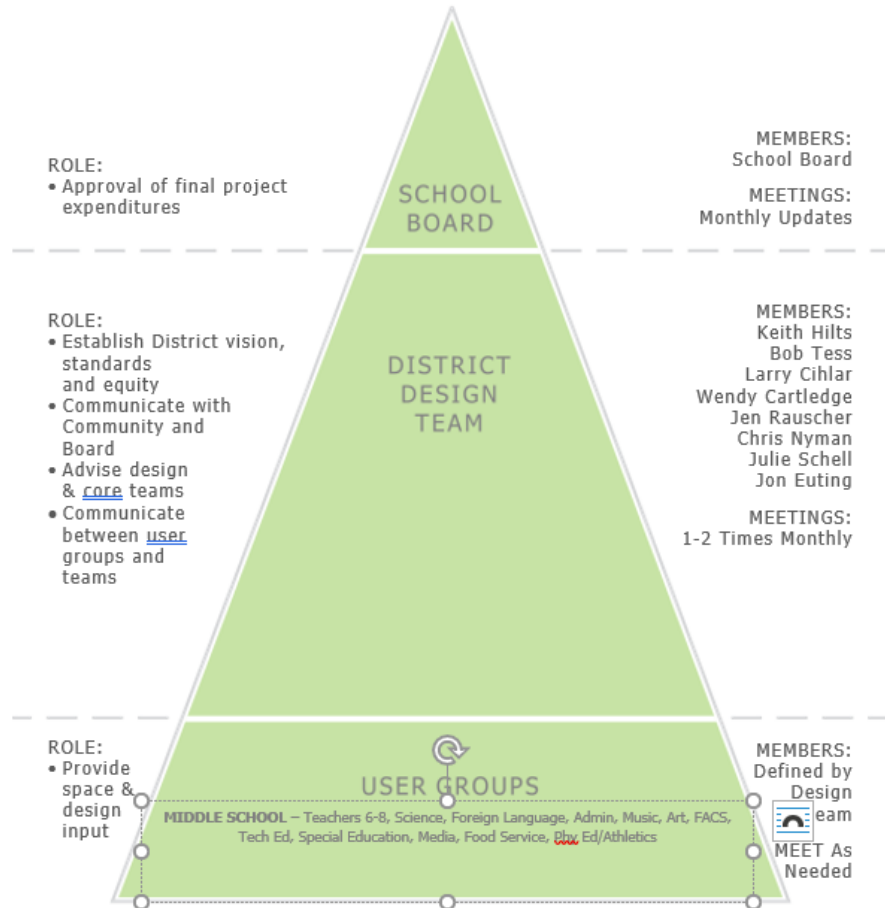


# Design Process



## Design Process

NEXUS SOLUTIONS®



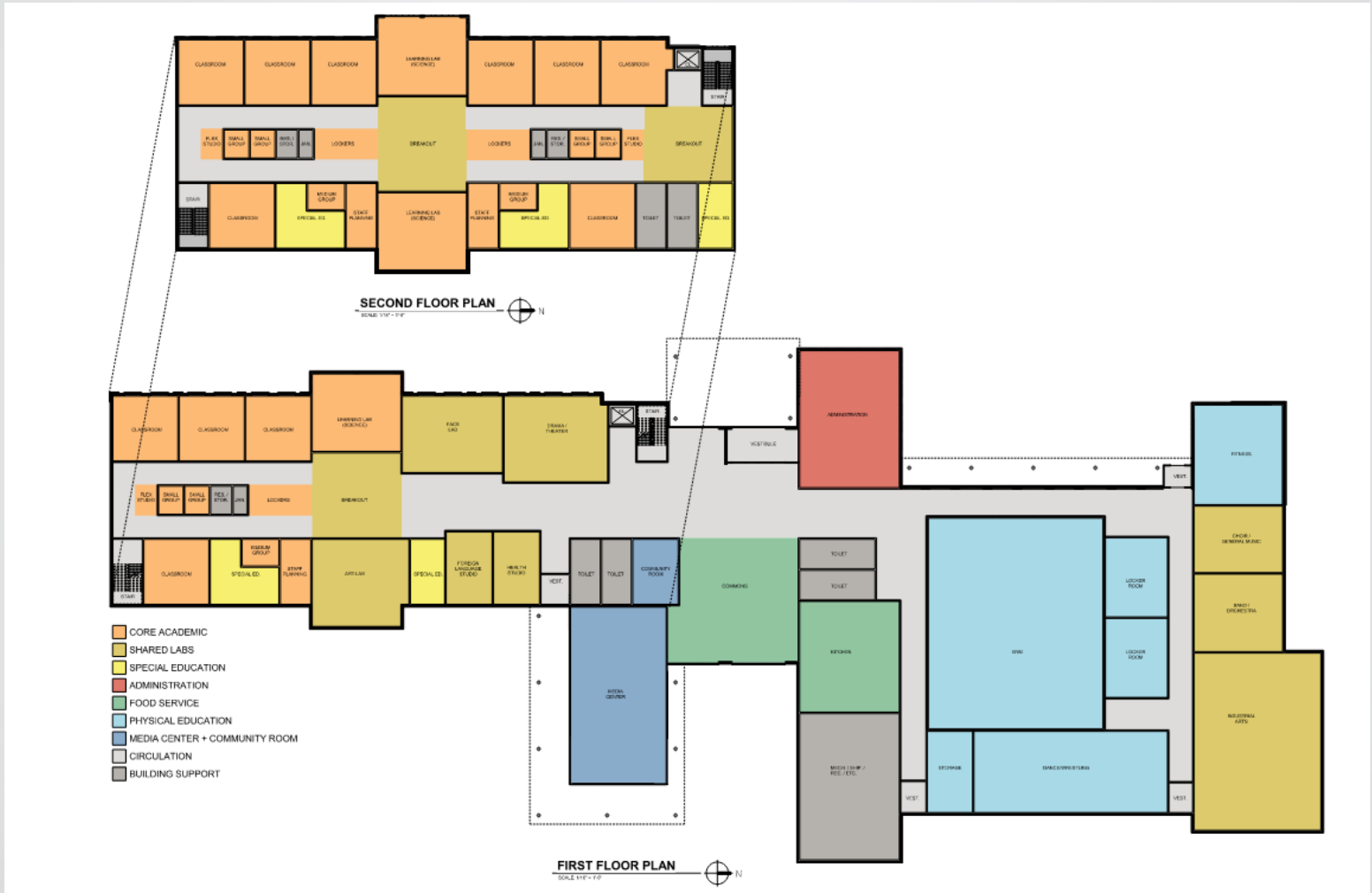


# Project Scope Review

<b>Abrams Elementary School</b>			
Selects	FIM #	Facility Improvement Measure (FIM) Description	Project Budget
<b>Building Envelope Repair</b>			
X	AES-BE-1	Replace Ballasted EPDM Roofing on Gym Roof	\$190,500
<b>Deferred Maintenance - All Selected Totals</b>			<b>\$190,500</b>
<b>Educational Adequacy</b>			
X	AES-EDA-1	Provide Secure Entry into Office (Storeroom System in Lobby or New Door/Vestibule in Existing Office)	\$60,000
<b>Educational Adequacy - All Selected Totals</b>			<b>\$60,000</b>
<b>Abrams Elementary - All Selected Totals</b>			<b>\$250,000</b>
<b>Ocala Falls Elementary School</b>			
Selects	FIM #	Facility Improvement Measure (FIM) Description	Project Budget with Inflation
<b>Building Envelope Repair</b>			
X	OFES-BE-1	Replace Ballasted EPDM Roof System with TPO Roofing System (Entire Building)	\$1,391,500
X	OFES-BE-5	Replace Roof Flashing at Wall Transitions, Replace Through-Wall Flashing	\$67,500
<b>Deferred Maintenance - All Selected Totals</b>			<b>\$1,459,000</b>
<b>Educational Adequacy</b>			
X	OFES-EDA-2	Provide Secure Entry into Office (Cut Door in at Vestibule into Conference Room)	\$30,000
<b>Educational Adequacy - All Selected Totals</b>			<b>\$30,000</b>
<b>Ocala Falls Elementary - All Selected Totals</b>			<b>\$1,489,500</b>
<b>New Middle School</b>			
Selects	FIM #	Facility Improvement Measure (FIM) Description	Project Budget with Inflation
<b>New Construction and Athletic Fields</b>			
X	NS-EDA-1	Construct New Middle School (With Community Access to Fitness Center)	\$34,026,000
X	NS-EDA-1a	Demolish & Clear Site of Existing Washington Middle School	\$1,517,500
<b>New Middle School - All Selected Totals</b>			<b>\$35,543,500</b>
			<b>\$4,636,000</b>
<b>Ocala Falls High School</b>			
Selects	FIM #	Facility Improvement Measure (FIM) Description	Project Budget with Inflation
<b>Building Envelope Repair</b>			
X	OFHS-BE-13	2001 Ballasted Roof 10-year Extended Warranty (2023)	\$298,500
<b>Deferred Maintenance - All Selected Totals</b>			<b>\$298,500</b>
<b>Educational Adequacy</b>			
X	OFHS-EDA-1	Provide Secure Entry into Office (Modify Storeroom System from Vestibule)	\$45,000
<b>Educational Adequacy - All Selected Totals</b>			<b>\$45,000</b>
<b>Ocala Falls High School - All Selected Totals</b>			<b>\$343,500</b>
<b>All Schools - All Selected Totals</b>			<b>\$37,625,500</b>



# Project Scope Review – New MS

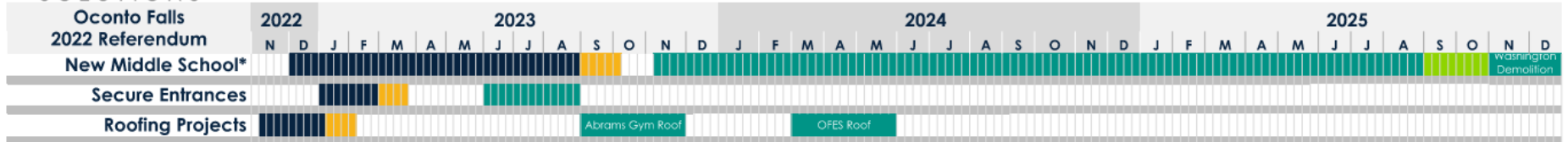




# Project Schedule

**nexus**  
SOLUTIONS®

PRELIMINARY - FOR REVIEW ONLY



- Design Phase
  - Bidding Phase
  - Construction Phase
  - Commissioning
- \*Early Site/Utility Package for Middle School - Bids March  
 \*Early Foundation Package - Bids July





# User Groups – New Middle School

- Teachers 6-8
- Science
- Foreign Language
- Admin
- Music
- Art
- FACS
- Special Ed
- Tech Ed
- Media Specialist
- Food Service
- PE/Athletics



## Next Steps

- Schedule Monthly Design Meetings
- Schedule Site Visits for Tech Ed Spaces
- Site Survey and Soil Borings
- Build on Design Concepts into Design Process
- Assemble User Groups for Design Input



**QUESTIONS?**

**NEXUS**  
SOLUTIONS®

